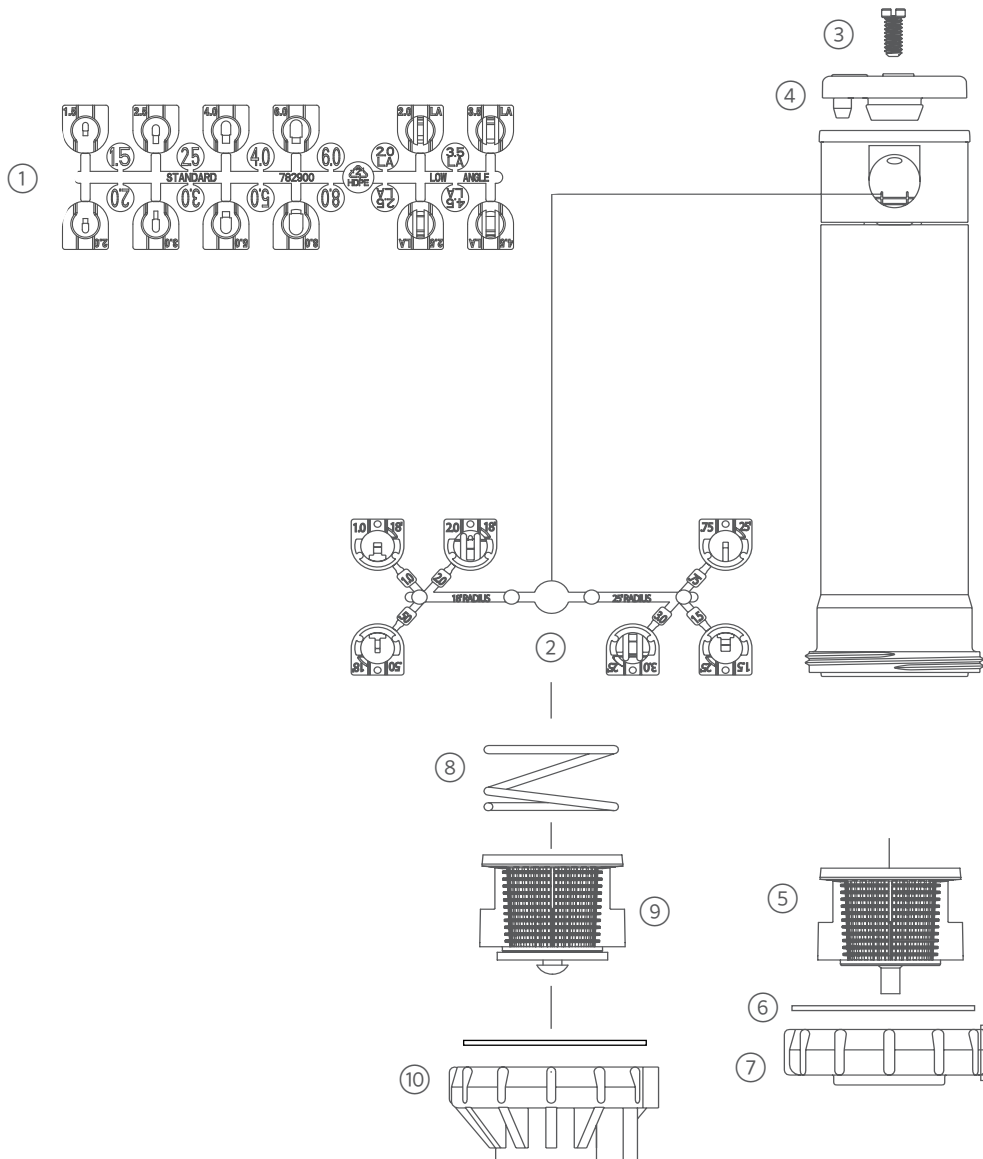


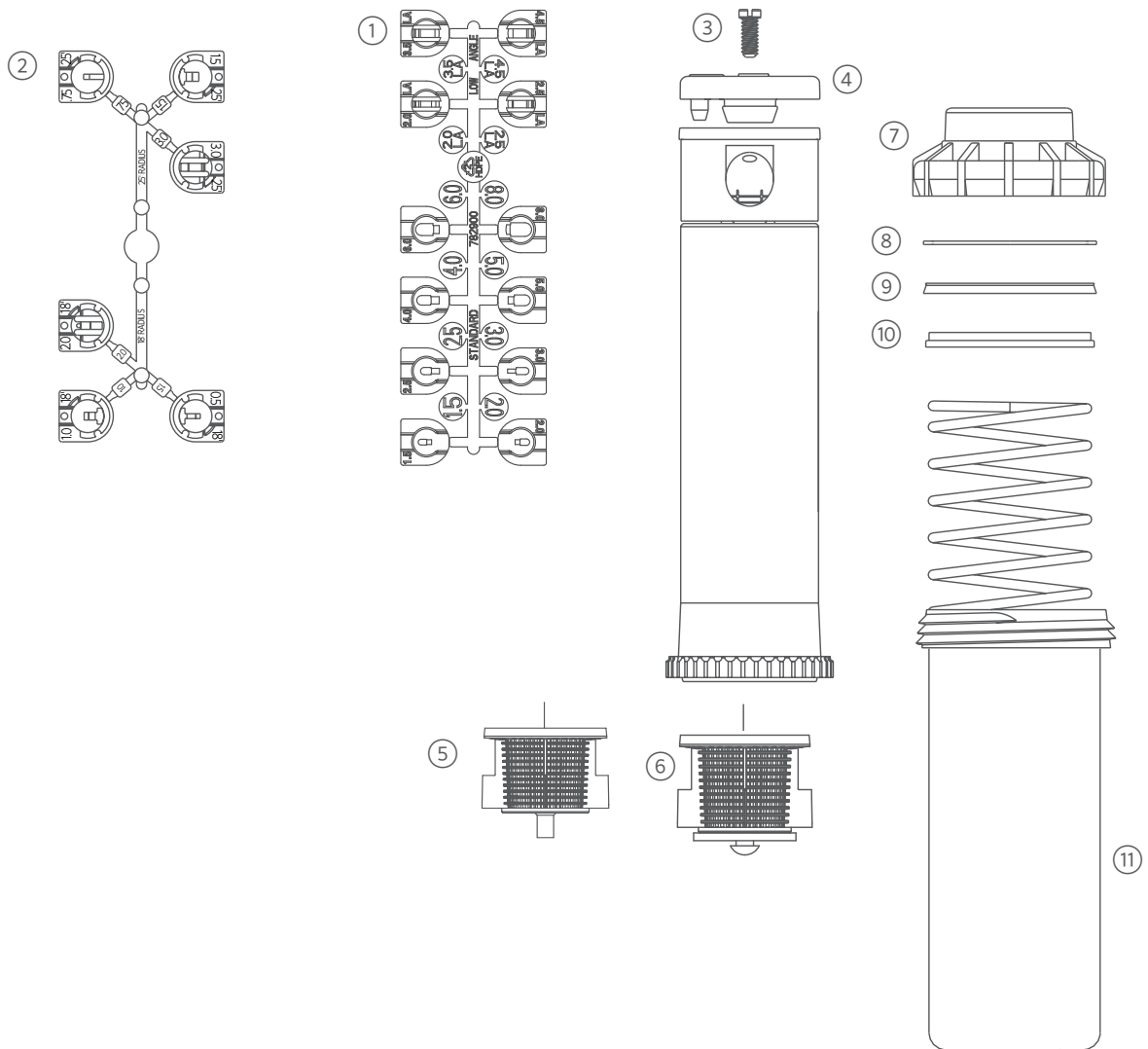
PGP-00-PRB: GEAR-DRIVEN ROTOR

ITEM	DESCRIPTION	CATALOG NO.
1	Standard (8) and Low-Angle (4) Nozzle Set, Blue and Gray	782900SP
2	Short-Radius Nozzle Set (6)	466100SP
3	Nozzle Retainer Screw - Headed with Slot	180900
4	Rubber Cover	Black 183600SP
		Purple 183605SP
5	Standard Filter Screen	Black 102600
6	O-Ring	170600
7	Standard Shrub Head Base	N/A
OPTIONS		
8	Check Valve Spring	235000
9	Filter Screen/Check Valve Subassembly	142300SP
10	Shrub Head Base with Pressure Regulator	N/A



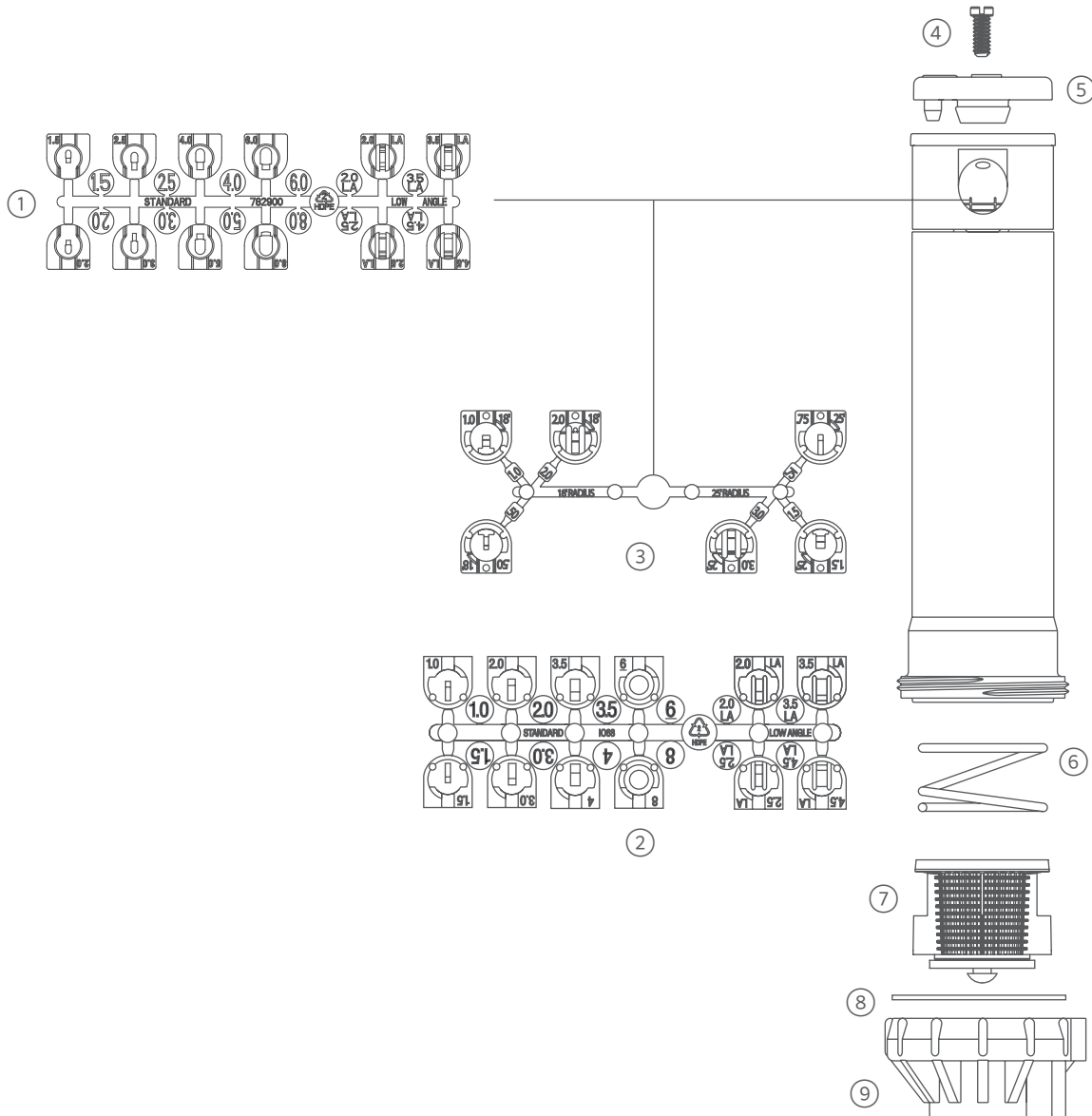
PGP-04-PRB ULTRA: GEAR-DRIVEN ROTOR

ITEM	DESCRIPTION	CATALOG NO.	
1	Standard (8) and Low-Angle (4) Nozzle Set, Blue and Gray	782900SP	
2	Short-Radius Nozzle Set (6), Black	466100SP	
3	Nozzle Retainer Screw - Headed with Slot	180900	
4	Rubber Cover Assembly	Black 183600SP	
		Purple 183605SP	
5	Filter Screen - Standard Model	102600	
6	Check Valve Screen Assembly	142300SP	
7	Body Cap	103700SP	
8	Slip Washer - PGP-12-CV-Only	296100	
9	Riser Seal	N/A	
10	Spring Seat	189900SP	
11	Body with Pressure Regulator	4" (10 cm)	N/A



I-20-00-PRB: GEAR-DRIVEN ROTOR

ITEM	DESCRIPTION	CATALOG NO.	
1	Standard (8) and Low-Angle (4) Nozzle Set, Blue and Gray	782900SP	
2	Standard (8) and Low-Angle (4) Nozzle Set, Navy Blue and Gray	356605SP	
3	Short-Radius Nozzle Set (6), Black	466100SP	
4	Nozzle Retainer Screw	180900	
5	Rubber Cover Assembly	Black	352476SP
		Purple	352478SP
6	Check Valve Spring	235000	
7	Check Valve Screen Assembly	142300SP	
8	O-Ring	170600	
9	Shrub Head Base with Pressure Regulator	N/A	



I-20-04-PRB, I-20-06-PRB: GEAR-DRIVEN ROTOR

ITEM	DESCRIPTION	CATALOG NO.	
1	Standard (8) and Low-Angle (4) Nozzle Set, Blue and Gray	782900SP	
2	Standard (8) and Low-Angle (4) Nozzle Set, Navy Blue and Gray	356605SP	
3	Short-Radius (6) Nozzle Set, Black	466100SP	
4	Nozzle Retainer Screw	180900	
5	Rubber Cover Assembly	Black	352476SP
		Purple	352478SP
6	Filter Screen with Check Valve Assembly	142300SP	
7	Body Cap	356000	
8	Slip Washer	I-20-04/I-20-06	102300
9	Riser Seal	I-20-04	252500SP
		I-20-06	252500SP
10	Spring Seat	I-20-04	227800
		I-20-06	227800
11	I-20 Shutoff Cap Assembly	296000	
12	Body	4" (10 cm)	N/A
		6" (15 cm)	N/A

